

In this update, we were able to use more data sources, e.g. data from several national schemes within one country were combined. Although increased number of countries and species has affected the indicators, the overall picture is consistent with the previous versions. The indicator of common farmland species shows that their numbers halved since 1980s. The decline of numbers of farmland birds has been accompanied by parallel decline of their biomass (Voříšek et al. 2010, <http://www.bou.org.uk/bouproc-net/fb3/voirsek-etal.pdf>).



The common forest bird indicator appears to keep stable, with some signals of increase in last decade.



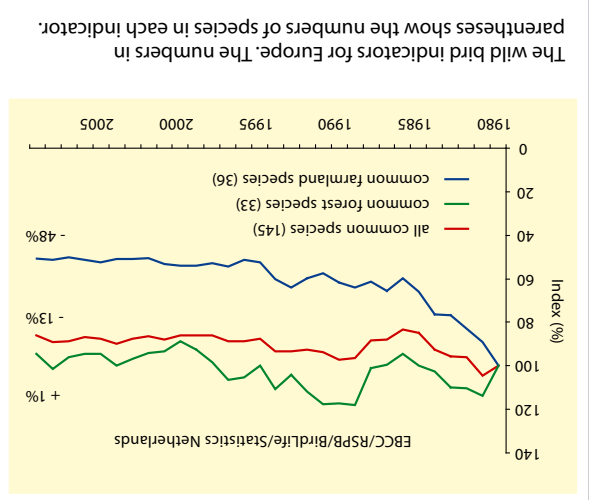
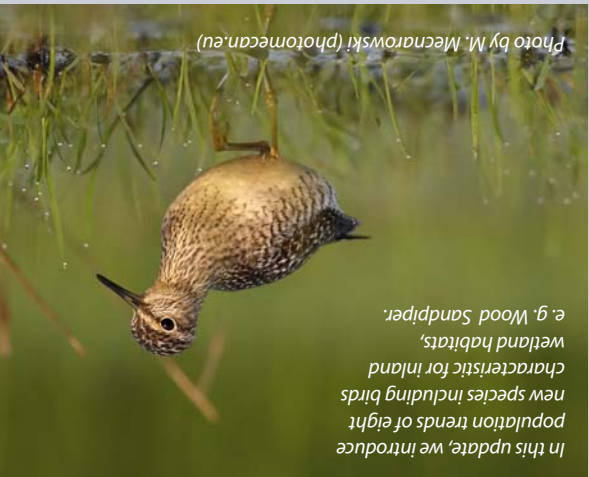
## Acknowledgements

Above all, very special thanks to the many thousands of skilled volunteer counters responsible for data collection.

Many thanks go to the individuals and organisations responsible for national data collation from volunteers and further data analysis: N. Teufelbauer, A. Weiserbs, Ch. Vansteenwegen, J.-P. Jacob, T. Kinet, J.-Y. Paquet, I. Hristov, S. Spasov, D. Pomeroy, M. Hellicar, Z. Vermouzek, J. Chytil, T. Telenský, H. Heldbjerg, M. Lerche-Jørgensen, A. Eskildsen, A. Kuresoo, J. Elts, A. Lehtikoinen, R. A. Väisänen, F. Jiguet, T. Komínos, S. Trautmann, M. Flade, J. Schwarz, T. Szep, K. Nagy, O. Crowe, D. Coombes, P. Rossi, L. Fornasari, E. de Carli, G. Tellini Florenzano, A. Aunins, I. Mardega, O. Keišs, C. van Turnhout, A. van Dijk, A. Boele, W. Teunissen, C. Plate, M. Husby, J. Atle Kålås, B. Archita, T. Chodkiewicz, P. Chylarecki, D. Leitão, R. Martins, A. Meirinho, J. Figelj, P. Krnec, K. Slabeyová, J. Ridzoň, J. Topercer, V. Escandell, J. C. del Moral, M. Anton, S. Herrando, Á. Lindström, H. Schmid, K. Risely, D. G. Noble, A. R. Renwick.



PECBMS is a joint initiative of the European Bird Census Council (EBCC) and BirdLife International. It has been supported financially since 2002 by the Royal Society for Protection of Birds (RSPB, the BirdLife International Partner in the UK), and since January 2006 by the European Commission and RSPB. Sole responsibility for the contents of this report lies with the authors; the European Commission is not responsible for any use that may be made of the information contained in this document.



## Indicators



A. van Strien, A. Gmelig Meyling and T. van der Meij (Statistics Netherlands) contributed with final data analysis and computation procedure.

We also thank N. Schäffer, D. W. Gibbons, J. Tavares, D. Richard and A. Teller for help and general support.

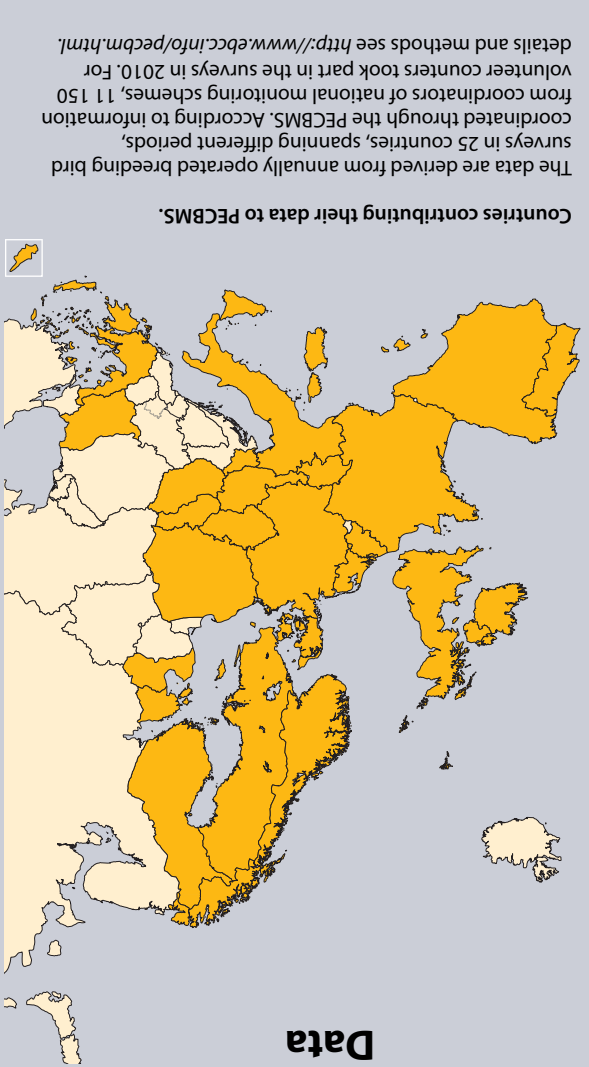
**PECBMS contact:** Petr Voříšek, project coordinator, Czech Society for Ornithology, Na Bělidle 252/34, CZ-150 00, Praha 5 - Smíchov, Czech Republic. E-mail: EuroMonitoring@birdlife.cz.

**Compiled by:** J. Škorpilová, P. Voříšek, A. Klvaňová, R. D. Gregory and I. J. Burfield.

**Layout:** J. Kaláček. Printed by JAVA Třeboň, Czech Republic.

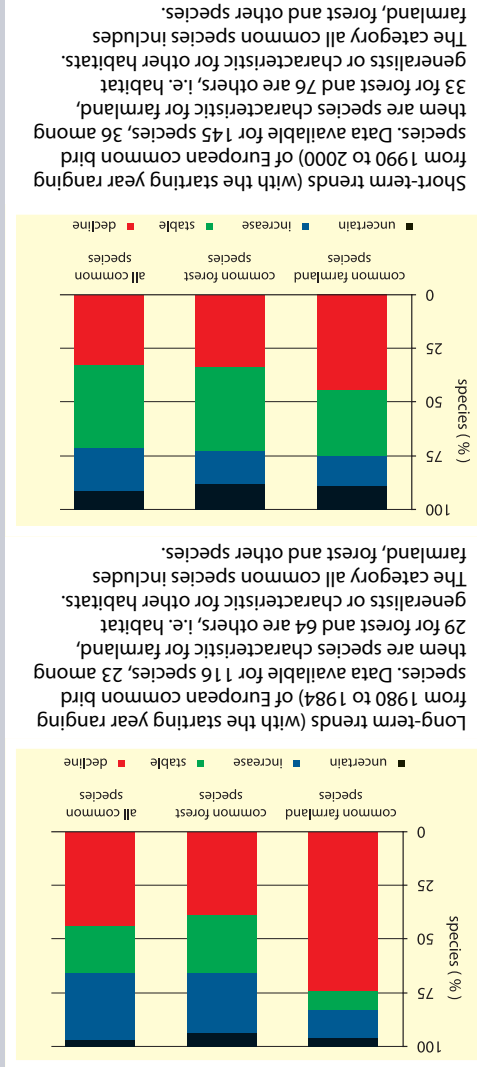
**Cover photo:** Common Coots by Z. Tunka (birdphoto.cz).

**Citation:** PECBMS 2011. Population Trends of Common European Breeding Birds 2011. CSO, Prague.



### PECBMS national data providers

Austria 	Belgium 	Bulgaria 	Cyprus 	Czech Republic 	Denmark 
Denmark 	Estonia 	Finland 	France 	Germany 	
Greece 	Hungary 	Ireland 	Italy 	Norway 	Slovakia 
Italy 	Latvia 	Netherlands 	Norway 	Poland 	Slovakia 
Norway 	Poland 	Portugal 	Slovakia 	Spain 	Slovakia 
Slovenia 	Sweden 	Switzerland 	United Kingdom 	United Kingdom 	United Kingdom 
Switzerland 	Switzerland 	United Kingdom 	United Kingdom 	United Kingdom 	United Kingdom 



### Population Trends of Common European Breeding Birds 2011

Although the indicator of common forest birds appears to be stable, the Goldcrest, the smallest European passerine, is moderately declining in Europe, experiencing large fluctuations in population size most likely caused by severe winters.

Photo by D. Jirovsky (wildbirdphoto.eu)

## Summary

This leaflet presents the combined bird species trends of 145 common bird species based on data collected from 25 European countries, covering the period 1980–2009.

Of the 145 species covered, 41 have increased moderately and 2 strongly, 54 have declined moderately and 1 steeply, while 35 have remained stable. In 12 cases species trends remain uncertain.

36 species were classified as farmland birds, of which 20 declined, 6 remained stable and trends of 4 were classified as uncertain.

33 species were classified as forest birds, of which 11 declined, 10 increased, 9 remained stable and trends of 3 were classified as uncertain.

The other 76 species were classified as other common birds, and included generalists and specialists of other habitats. Of these, 24 declined, 27 increased, 20 remained stable and trends of 5 were classified as uncertain.

The situation of European farmland birds remains alarming. The index of common farmland birds has fallen by 48% over the last 30 years.

Short-term trends (with the starting year ranging from 1990 to 2000) of European common bird species. Data available for 145 species, 36 among them are species characteristic for farmland, 33 for forest and 76 are others, i.e. habitat generalists or characteristic for other habitats. The category all common species includes farmland, forest and other species.

Long-term trends (with the starting year ranging from 1980 to 1984) of European common bird species. Data available for 145 species, 36 among them are species characteristic for farmland, 29 for forest and 64 are others, i.e. habitat generalists or characteristic for other habitats. The category all common species includes farmland, forest and other species.

### Pan-European Common Bird Monitoring Scheme (PECBMS)

EBCC  
European Bird Census Council

RSPB  
every bird counts

BirdLife  
INTERNATIONAL

CSO

ICO  
Catalan Ornithological Institute



Legend for Table

The quality of outputs may differ species by species. In some cases, the coverage of species' populations and thus the representativeness of the data may be lower at the beginning of the time series (for information on the time span and the list of countries contributing with their data for individual species, see <http://www.ebcc.info/pecbm.html>). Furthermore, year to year fluctuations might not always reflect real population change, so we recommend cautious interpretation of year by year changes. Readers should also pay attention to individual species' legends.

**Long/short-term trend:** change (in %) in an index value between first and last year of a time period.

**Long/short-term annual change:** average percentage change per year.

**Long-term:** 1980–2009, **Short-term:** 1990–2009.

**Trend classification:** ↑↑ strong increase, ↑ moderate increase, — stable, ↓ moderate decline, ↓↓ steep decline, ? uncertain.

**Habitat:** **for** – forest, **farm** – farmland, **oth** – other.

- Long-term trend not available.
- Long-term trend: 1981–2009.
- Long-term trend: 1982–2009.
- Long-term trend: 1984–2009.
- Short-term trend: 1991–2009.
- Short-term trend: 1998–2009.
- Short-term trend: 1999–2009.
- Short-term trend: 2000–2009.
- Index for early period may be unrepresentative due to limited geographical coverage and needs to be treated with caution.
- Index might be influenced by releases by hunters.

For more details on species trends, including standard errors, see <http://www.ebcc.info/trends2011.html>.

Trend classification

The multiplicative overall slope estimate (trend value) in TRIM is converted into one of the following categories. The category depends on the overall slope, as well as its 95% confidence interval (= slope +/- 1.96 times the standard error of the slope).

↗ **Strong increase** – increase significantly more than 5% per year (5% would mean a doubling in abundance within 15 years). Criterion: lower limit of confidence interval > 1.05.

↗ **Moderate increase** – significant increase, but not significantly more than 5% per year. Criterion: 1.00 < lower limit of confidence interval < 1.05.

↔ **Stable** – no significant increase or decline, and it is certain that trends are less than 5% per year. Criterion: confidence interval encloses 1.00 but lower limit > 0.95 and upper limit< 1.05.

↘ **Uncertain** – no significant increase or decline, but not certain if trends are less than 5% per year. Criterion: confidence interval encloses 1.00 but lower limit < 0.95 or upper limit > 1.05.

↘ **Moderate decline** – significant decline, but not significantly more than 5% per year. Criterion: 0.95 < upper limit of confidence interval < 1.00.

↘ **Steep decline** – decline significantly more than 5% per year (5% would mean a halving in abundance within 15 years). Criterion: upper limit of confidence interval < 0.95.

Population Trends of Common European Breeding Birds.								
Species		Long-term		Class.	Short-term		Class.	Habitat
		Trend (%)	Annual Change (%)		Trend (%)	Annual Change (%)		
<i>Ciconia ciconia</i>	White Stork <sup>3,9</sup>	204	3.90	↑	28	2.01	↑	farm
<i>Circus aeruginosus</i>	Western Marsh-harrier	310	4.36	↑	-11	-0.14	—	oth
<i>Cisticola juncidis</i>	Zitting Cisticola <sup>1,6</sup>				-38	-1.00	↓	oth
<i>Coccothraustes coccothraustes</i>	Hawfinch <sup>9</sup>	609	1.63	↑	-31	-1.46	↓	for
<i>Columba oenas</i>	Stock Dove	42	0.85	—	42	1.11	—	for
<i>Columba palumbus</i>	Common Wood-pigeon	84	1.85	↑	32	1.79	↑	oth
<i>Corvus corax</i>	Common Raven	118	2.21	↑	74	1.72	↑	oth
<i>Corvus corone &amp; cornix</i>	Carrian & Hooded Crow	20	0.61	↑	4	0.46	—	oth
<i>Corvus frugilegus</i>	Rook	35	1.16	↑	18	0.57	—	farm
<i>Corvus monedula</i>	Eurasian Jackdaw <sup>9</sup>	-5	-1.22	↓	-39	-2.70	↓	oth
<i>Cuculus canorus</i>	Common Cuckoo	-21	-1.13	↓	-15	-0.49	—	oth
<i>Cyanopica cyanus</i>	Azure-winged Magpie <sup>1,6</sup>				82	4.50	↑	for
<i>Cygnus olor</i>	Mute Swan	31	1.81	↑	38	1.50	↑	oth
<i>Delichon urbicum</i>	Northern House-martin	-18	-1.51	↓	-22	-1.44	—	oth
<i>Dendrocopos major</i>	Great Spotted Woodpecker	57	1.63	↑	19	2.11	↑	oth
<i>Dendrocopos medius</i>	Middle Spotted Woodpecker <sup>1</sup>				-10	1.81	—	for
<i>Dendrocopos minor</i>	Lesser Spotted Woodpecker <sup>9</sup>	-75	-3.47	?	-58	-4.33	?	for
<i>Dendrocopos syriacus</i>	Syrian Woodpecker <sup>1,7</sup>				-22	-2.89	?	oth
<i>Dryocopus martius</i>	Black Woodpecker	148	1.64	↑	64	2.04	—	for
<i>Emberiza cia</i>	Rock Bunting <sup>1,6</sup>				25	-0.18	—	oth
<i>Emberiza cirlus</i>	Cirl Bunting <sup>1</sup>				30	3.36	↑	farm
<i>Emberiza citrinella</i>	Yellowhammer	-40	-1.56	↓	-20	-1.01	↓	farm
<i>Emberiza hortulana</i>	Ortolan Bunting <sup>9</sup>	-84	-6.21	↓↓	-43	-0.80	—	farm
<i>Emberiza melanocephala</i>	Black-headed Bunting <sup>1,8</sup>				49	4.87	?	farm
<i>Emberiza rustica</i>	Rustic Bunting	-72	-5.39	↓	-64	-7.75	↓↓	for
<i>Emberiza schoeniclus</i>	Reed Bunting	-24	-0.69	↓	-13	-0.96	↓	oth
<i>Erithacus rubecula</i>	European Robin	24	1.29	↑	11	0.96	↑	oth

<i>Falco tinnunculus</i>	Common Kestrel	-35	-0.72	↓	-42	-2.76	↓	farm
<i>Ficedula albicollis</i>	Collared Flycatcher <sup>3,9</sup>	142	2.52	↑	50	0.14	—	for
<i>Ficedula hypoleuca</i>	European Pied Flycatcher	-21	-0.92	↓	-23	-1.08	↓	for
<i>Fringilla coelebs</i>	Eurasian Chaffinch	4	0.16	↑	-6	-0.15	—	oth
<i>Fringilla montifringilla</i>	Brambling	-76	-3.53	↓	-43	-3.08	↓	oth
<i>Fulica atra</i>	Common Coot <sup>9</sup>	51	0.79	↑	-7	0.03	—	oth
<i>Galerida cristata</i>	Crested Lark <sup>3,9</sup>	-95	-11.80	↓	0	2.94	?	farm
<i>Galerida theklae</i>	Thekla Lark <sup>1,6</sup>				43	2.58	↑	farm
<i>Gallinago gallinago</i>	Common Snipe	-41	-2.04	↓	-16	-0.13	—	oth
<i>Gallinula chloropus</i>	Common Moorhen	-6	0.62	↑	0	0.78	—	oth
<i>Garrulus glandarius</i>	Eurasian Jay	25	0.83	↑	32	1.75	↑	for
<i>Hippolais icterina</i>	Icterine Warbler	-50	-1.64	↓	-25	-1.32	↓	oth
<i>Hippolais polyglotta</i>	Melodious Warbler <sup>1</sup>				-23	-1.14	—	oth
<i>Hirundo rupestris</i>	Eurasian Crag-martin <sup>1,6</sup>				0	1.25	—	oth
<i>Hirundo rustica</i>	Barn Swallow	-18	-0.59	—	-33	-1.84	↓	farm
<i>Jynx torquilla</i>	Eurasian Wryneck <sup>9</sup>	-49	-3.38	↓	-30	-2.10	↓	oth
<i>Lanius collurio</i>	Red-backed Shrike	-36	0.52	—	31	0.95	—	farm
<i>Lanius minor</i>	Lesser Grey Shrike <sup>1,7</sup>				-50	-4.71	?	farm
<i>Lanius senator</i>	Woodchat Shrike <sup>1,6</sup>				0	-1.29	↓	farm
<i>Limosa limosa</i>	Black-tailed Godwit <sup>4</sup>	-45	-3.10	↓	-55	-3.64	↓	farm
<i>Locustella fluviatilis</i>	Eurasian River Warbler <sup>3,9</sup>	-62	-1.47	↓	-45	-1.79	—	oth
<i>Locustella naevia</i>	Common Grasshopper-warbler	-39	0.14	—	3	0.13	—	oth
<i>Lullula arborea</i>	Wood Lark <sup>9</sup>	-3	3.28	↑	43	0.38	—	oth
<i>Luscinia luscinia</i>	Thrush Nightingale	9	1.12	↑	18	1.39	↑	oth
<i>Luscinia megarhynchos</i>	Common Nightingale	-63	-1.84	↓	-5	0.34	—	oth
<i>Melanocorypha calandra</i>	Calandra Lark <sup>1,6</sup>				-35	-4.66	↓	farm
<i>Merops apiaster</i>	European Bee-eater <sup>1</sup>				98	0.44	?	oth
<i>Miliaria calandra</i>	Corn Bunting	-66	-3.53	↓	-24	-1.70	↓	farm
<i>Motacilla alba</i>	White Wagtail	-19	-0.45	↓	-35	-1.04	↓	oth
<i>Motacilla cinerea</i>	Grey Wagtail <sup>3,9</sup>	-34	-0.64	—	-19	-0.28	—	oth
<i>Motacilla flava</i>	Yellow Wagtail	-53	-3.04	↓	-2	-1.06	—	farm
<i>Muscicapa striata</i>	Spotted Flycatcher	-43	-1.67	↓	-19	-0.90	—	oth
<i>Nucifraga caryocatactes</i>	Spotted Nutcracker	41	-0.01	—	-59	-2.82	?	for
<i>Numenius phaeopus</i>	Whimbrel <sup>4</sup>	-28	-0.43	—	-8	0.30	—	oth

Population Trends of Common European Breeding Birds.								
Species		Long-term		Class.	Short-term		Class.	Habitat
		Trend (%)	Annual Change (%)		Trend (%)	Annual Change (%)		
<i>Oenanthe hispanica</i>	Black-eared Wheatear <sup>1,6</sup>				-8	-1.86	↓	farm
<i>Oenanthe oenanthe</i>	Northern Wheatear <sup>9</sup>	-66	-3.82	↓	-69	-4.36	↓	oth
<i>Oriolus oriolus</i>	Eurasian Golden Oriole <sup>3</sup>	18	0.41	—	28	1.32	—	oth
<i>Parus ater</i>	Coal Tit	-12	-0.54	—	-23	-1.40	—	for
<i>Parus caeruleus</i>	Blue Tit	36	1.30	↑	30	1.76	↑	oth
<i>Parus cristatus</i>	Crested Tit	-35	-1.01	↓	-23	-0.91	↓	for
<i>Parus major</i>	Great Tit	13	0.33	↑	14	0.89	↑	oth
<i>Parus montanus</i>	Willow Tit	-64	-3.23	↓	-45	-1.84	↓	for
<i>Parus palustris</i>	Marsh Tit	-32	-1.61	↓	-9	0.18	—	for
<i>Passer domesticus</i>	House Sparrow	-62	-2.37	↓	-7	-0.38	—	oth
<i>Passer montanus</i>	Eurasian Tree Sparrow	-53	-1.93	↓	9	-1.23	—	farm
<i>Perdix perdix</i>	Grey Partridge	-82	-6.38	↓	-66	-6.43	↓	farm
<i>Petronia petronia</i>	Rock Sparrow <sup>1,6</sup>				2	1.28	—	farm
<i>Phoenicurus ochruros</i>	Black Redstart <sup>3,9</sup>	36	0.89	—	-6	0.24	—	oth
<i>Phoenicurus phoenicurus</i>	Common Redstart	7	0.70	↑	45	1.45	↑	for
<i>Phylloscopus bonelli</i>	Bonelli's Warbler <sup>1</sup>				-37	-1.77	?	for
<i>Phylloscopus collybita</i>	Common Chiffchaff	76	2.01	↑	-15	-0.44	↓	for
<i>Phylloscopus sibilatrix</i>	Wood Warbler	-33	-2.11	↓	-32	-2.78	↓	for
<i>Phylloscopus trochilus</i>	Willow Warbler	-33	-1.54	↓	-34	-1.73	↓	oth
<i>Pica pica</i>	Black-billed Magpie	-1	-1.12	↓	-41	-3.75	↓	oth
<i>Picus canus</i>	Grey-faced Woodpecker <sup>3,9</sup>	179	1.81	?	-21	-1.45	—	for
<i>Picus viridis</i>	Eurasian Green Woodpecker	43	2.54	↑	42	2.71	↑	oth
<i>Pluvialis apricaria</i>	Eurasian Golden-plover <sup>2,9</sup>	-14	-0.88	↓	62	0.68	—	oth
<i>Prunella modularis</i>	Hedge Accentor	-39	-1.45	↓	-24	-1.00	↓	oth
<i>Pyrrhocorax pyrrhocorax</i>	Red-billed Chough <sup>1,6</sup>				28	0.40	?	oth
<i>Pyrrhula pyrrhula</i>	Eurasian Bullfinch	-58	-1.69	↓	-42	-2.86	↓	for
<i>Regulus ignicapilla</i>	Firecrest <sup>3,9</sup>	-30	-0.05	—	-41	-0.21	—	for
<i>Regulus regulus</i>	Goldcrest	-48	-1.52	↓	-61	-2.56	↓	for
<i>Saxicola rubetra</i>	Whinchat	-67	-1.87	↓	-13	0.04	—	farm

<i>Saxicola torquatus</i>	Common Stonechat <sup>1</sup>				29	0.41	—	farm
<i>Serinus serinus</i>	European Serin <sup>3,9</sup>	-44	-3.07	↓	-37	-2.72	↓	farm
<i>Sitta europaea</i>	Wood Nuthatch	72	1.42	↑	-8	0.19	—	for
<i>Streptopelia decaocto</i>	Eurasian Collared-dove	94	1.67	↑	152	5.32	↑	oth
<i>Streptopelia turtur</i>	European Turtle-dove	-69	-3.89	↓	-22	-0.93	↓	farm
<i>Sturnus unicolor</i>	Spotless Starling <sup>1,6</sup>				13	1.52	↑	farm
<i>Sturnus vulgaris</i>	Common Starling	-53	-2.01	↓	-8	-0.77	↓	farm
<i>Sylvia atricapilla</i>	Blackcap	114	2.94	↑	41	2.29	↑	oth
<i>Sylvia borin</i>	Garden Warbler	-25	-0.59	↓	-23	-0.55	↓	oth
<i>Sylvia cantillans</i>	Subalpine Warbler <sup>1</sup>				39	2.93	?	oth
<i>Sylvia communis</i>	Common Whitethroat	27	1.19	↑	11	0.75	↑	farm
<i>Sylvia curruca</i>	Lesser Whitethroat	-15	0.23	—	10	0.45	↑	oth
<i>Sylvia hortensis</i>	Orphean Warbler <sup>1</sup>				80	9.61	↑↑	oth
<i>Sylvia melanocephala</i>	Sardinian Warbler <sup>1</sup>				89	1.24	—	oth
<i>Sylvia nisoria</i>	Barred Warbler <sup>3,9</sup>	-48	-1.75	?	-46	-2.97	↓	oth
<i>Sylvia undata</i>	Dartford Warbler <sup>1,6</sup>				-34	-5.12	↓	oth
<i>Tringa glareola</i>	Wood Sandpiper	-33	-0.68	—	-3	-0.84	—	oth
<i>Tringa ochropus</i>	Green Sandpiper <sup>9</sup>	-11	0.79	—	-3	0.46	—	for
<i>Tringa totanus</i>	Common Redshank	-51	-2.27	↓	-46	-2.97	↓	oth
<i>Troglodytes troglodytes</i>	Winter Wren	56	1.95	↑	4	1.26	↑	oth
<i>Turdus iliacus</i>	Redwing	10	-0.13	—	15	0.55	↑	oth
<i>Turdus merula</i>	Eurasian Blackbird	16	1.10	↑	17	1.06	↑	oth
<i>Turdus philomelos</i>	Song Thrush	2	0.35	↑	32	1.49	↑	oth
<i>Turdus pilaris</i>	Fieldfare	5	0.32	—	-36	-1.28	↓	oth
<i>Turdus viscivorus</i>	Mistle Thrush	-23	-0.87	↓	-9	-0.60	—	for
<i>Upupa epops</i>	Eurasian Hoopoe <sup>3,9</sup>	137	3.70	?	-25	0.05	—	farm
<i>Vanellus vanellus</i>	Northern Lapwing	-52	-3.06	↓	-38	-1.76	↓	farm

Species names: BirdLife International (2011). The BirdLife checklist of the birds of the world, with conservation status and taxonomic sources. Version 4.

Downloaded from <http://www.birdlife.info/im/species/checklist.zip>

Table with species names ordered according to taxonomy can be found on <http://www.ebcc.info/trends2011.html>